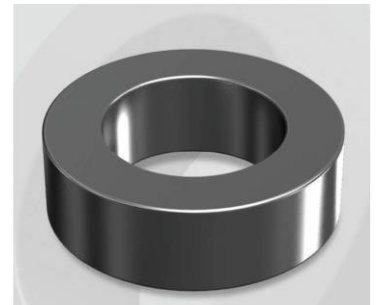


CK571075G

Electrical Characteristics

Material	Permeability (μ)	AL \pm 8% (nH/N ²)	DCB (% min) @ 80 Oe	Coreloss (mW/cm ² , max) @ 50kHz, 500G
Mega Flux	75	172	53.4	160

OD : 571



Core Dimensions

Dimensions		Uncoated		Coated		Color	Packaging
		(mm)	(inch)	(mm)	(inch)		
OD	(Max)	57.15	2.250	58.00	2.283	Black	Box Qty = 77 pcs
ID	(min)	26.39	1.039	25.60	1.008		
HT	(max)	15.24	0.600	16.10	0.634		

Physical Characteristics

Cross Section (A)	Path Length (l)	Window Area (Wa)	Volume (V)	Breakdown Voltage (Vac)
2.290 cm ²	12.50 cm	5.14 cm ²	28.625 cm ³	1,000
0.355 in ²	4.92 in	1,014,407 cmil	1.747 in ³	

Winding Information

0% Winding length/turn (cm)		
6.460		
40% winding factor Surface Area (cm ²)		
120.40		
40% Wound Di.(mm)		
OD	ID	HT
64.20	16.75	23.62

Typical DC Bias Performance

